

MILTON HARVEST FESTIVAL CRUISE, BLOCK DANCE & CRUISE-IN

Bound Avenue

Sponsored By:

**Susquehanna
Valley C.A.R.T.S.**

(Classics, Antiques, Rods, Trucks, Specialties)

**Milton
McDonalds**



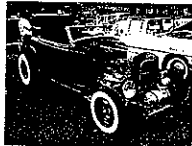
**Sunday
September 21, 2008**



****ALL VEHICLES WELCOME****

FREE BEVERAGE TO ALL CRUISE-IN PARTICIPANTS

**CRUISE AT 4:00 PM
(GATHER AT 3:00 PM)
(See back for route)**



TRIVIA

**CRUISE-IN & BLOCK DANCE
5:00 - 8:00 PM**

50/50



**Good old
50's & 60's
Music**



Door Prizes



All Weather Permitting



INFO: (570) 742-4816, (570) 437-2621, (570) 523-8147

All children under the age of 12 must be accompanied by a responsible adult.

www.susquehannavalleycart.com



MILTON HARVEST FESTIVAL CRUISE TO COVER 65 MILES

FILL UP THOSE GAS TANKS, DUST OFF THE VEHICLE AND COME OUT AND ENJOY THE CRUISE SCHEDULED FOR SUNDAY SEPTEMBER 21ST. PARTICIPANTS WILL START TO GATHER AT 3:00 PM ON BOUND AVENUE IN THE MUNICIPAL PARKING LOT.

THE CRUISE WILL MOVE AT 4:00 PM SHARP. ALL VEHICLES ARE WELCOME TO PARTICIPATE.

VEHICLES WILL TRAVEL NORTH ON ROUTE 405 INTO WATSONTOWN AND CONTINUE TO ROUTE 54. TURNING EAST THEY WILL CONTINUE INTO TURBOTVILLE AND PROCEED ON ROUTE 54 TO WASHINGTONVILLE AND ON TOWARDS DANVILLE ON ROUTE 54. AT THE INTERSECTION WITH 642 YOU WILL TURN RIGHT TO GO WEST ON 642 INTO MILTON.

PROCEED INTO MILTON ON MAHONING STREET TO THE RED LIGHT WITH ARCH. TURN RIGHT AT THE RED LIGHT AND PROCEED TO THE NEXT RED LIGHT AT BROADWAY AND ARCH. TURN LEFT TO RETURN TO THE MUNICIPAL PARKING LOT TO ENJOY THE BLOCK DANCE.

THE BLOCK DANCE WILL START AT 5:00 PM AND WILL FEATURE 50'S-60'S MUSIC, 50/50, AND TRIVIA.

